

## RAPTOR DIVER ASSISTED RIG

The drill rigs that we operate are generally used for rock anchoring solutions

### Technical Specification

#### General Dimension (at drilling position)

Length OA 2115 MM

Width OA 3405 MM

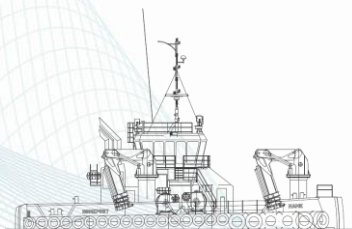
Height OA 4700 MM

#### Drilling Capability

Max. Drilling Diameter 100 MM

Extension Capability Equipped with 3-meter extensions

Drilling Depth Drilling Depth: Adjustable to meet required depth using extensions



## AUGER SUBMERSIBLE DRILLING RIG- AUGER SDR



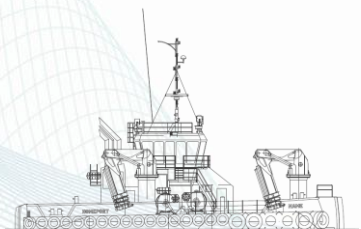
Auger SDR is Leask Marine's middle range submersible drilling rig and has been designed for the installation of Auger/Helix anchor into soft sediment.

### Technical Specification

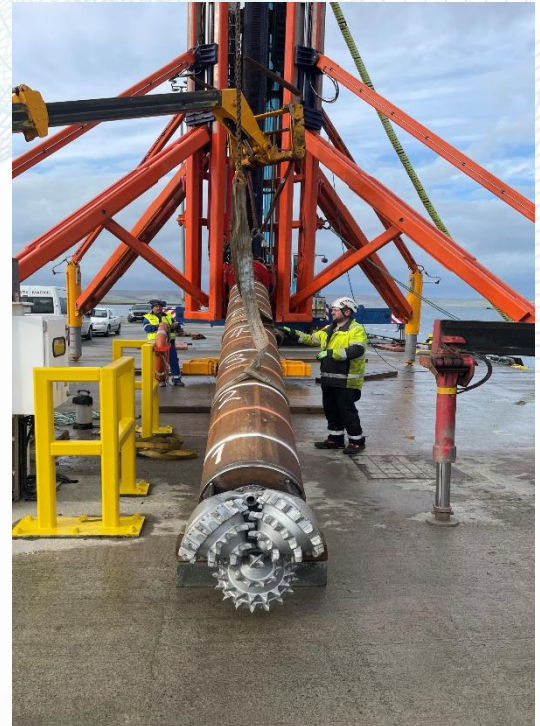
#### General Dimension

Torque Range	33,295- 66,589Nm
Speed Range	8-21 RPM
Mast overall height	8 M
Frame Position Dimensions	3.0 M x 2.8 M x 2.8 M
Drilling Position Dimensions	8.0 M x 4.4 M x 4.4 M
Weight	4.6T
Operating Water Depth	Up to 40 M
Drill Head	65,000 Max. earth drill head
Anchor Length	Up to 5.5 M
Flight Diameter	Up to 1,000 MM

#### Anchor Installation



# RAPTOR SUBMERSIBLE DRILLING RIG- RAPTOR SDR



Leask Marine’s Raptor SDR combines existing drilling rig concepts available on the market with an innovative, robust, purpose-built solution that enables low-cost drilling and piling operations.

### Technical Specification

#### Drilling Position Dimension

Length 8.2 M

Width 8.5 M

Height 11.4 M

#### Storage Position Dimension

Length 10.8 M

Width 2.1 M

Height 2.3 M

#### Drilling head

Pull Back Capacity 51 T

Speed 1<sup>st</sup> Gear 2963Nm (0 to 43 RPM)

Speed 2nd Gear 1558Nm ( 0 to 83 RPM)

Speed 3rd Gear 389Nm ( 0 to 330 RPM)

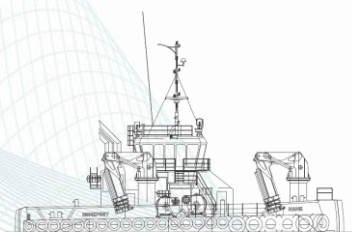
Overall Weight 30T

Drill hole Diameter < 800 MM

Levelized Feet Up to 1 M

### SDR Unique Features

- Low environmental impact
- Operational in high tide flow sites
- Containerised in 40ft open-top for international transportation
- Retractable legs
- Self-levelling feet
- No commercial Diver or ROV required
- Remote control system



## RAPTOR SUBMERSIBLE DRILLING RIG- RAPTOR SDR

Raptor Anchoring offer three different types of Anchors-

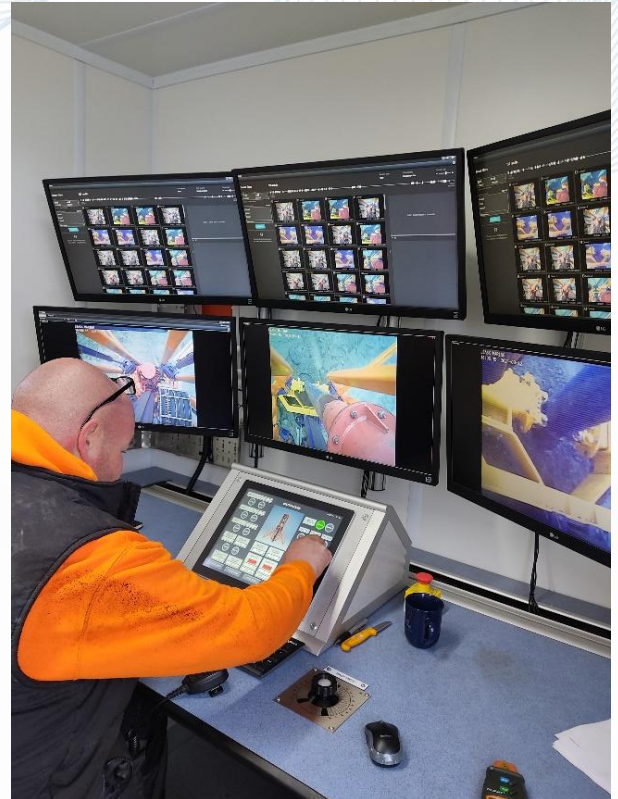
- Mechanical Anchors- Raptor Strataloc & Raptor Anchor
- Grouted Anchor Pile- Raptor G.A.P Tricone
- Auger Anchor- Helix Raptor Screw Pile.

### Control Cabin

The RAPTOR SDR is remotely control from a control cabin locate on the deck of the deployment vessel.

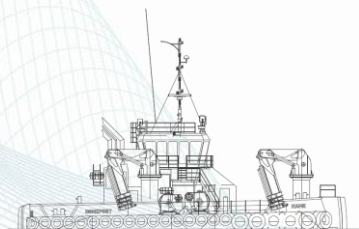
A 20ft container has been adapted to function as the system control cabin and allows to remote-control the SDR to depth up to 100m.

The control cabin features; six 32" screens that help to monitor the operation., the container has also been divided to allow from a workshop area in the opposite end of the control cabin.



### Cabin General Dimension

Length	6.05 M
Breadth	2.35 M
Height	2.35 M



# ANCHOR SPECIFICATIONS

Anchor Type	Dimension		Capacity (T)		
	Diameter (mm)	Length (mm)	Vertical MBL	45 Degree MBL	Lateral MBL
LM MA*	150	6	120	169.71	400
	250	6	200	282.85	666.6
	300	6	240	339.41	799.92
LM Anchor*	300	6	250	353.56	799.92
	600	6	320	452.55	3219.52
GAP Core Grouted/ non-grouted	300	6	162.8	230.24	799.17
	600	6	327	462.45	3219.52
	800	6	394	557.21	5731.2
GAP Tricone Grouted/ non-grouted	300	6	165	233.35	799.17
	600	6	335	473.77	3219.52
	800	6	405	572.76	57331.2
*Mechanical System Anchors					

