

## RAPTOR Scout

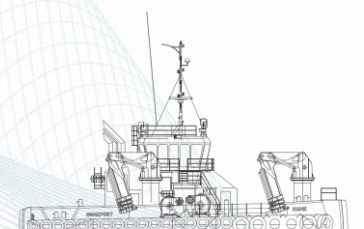
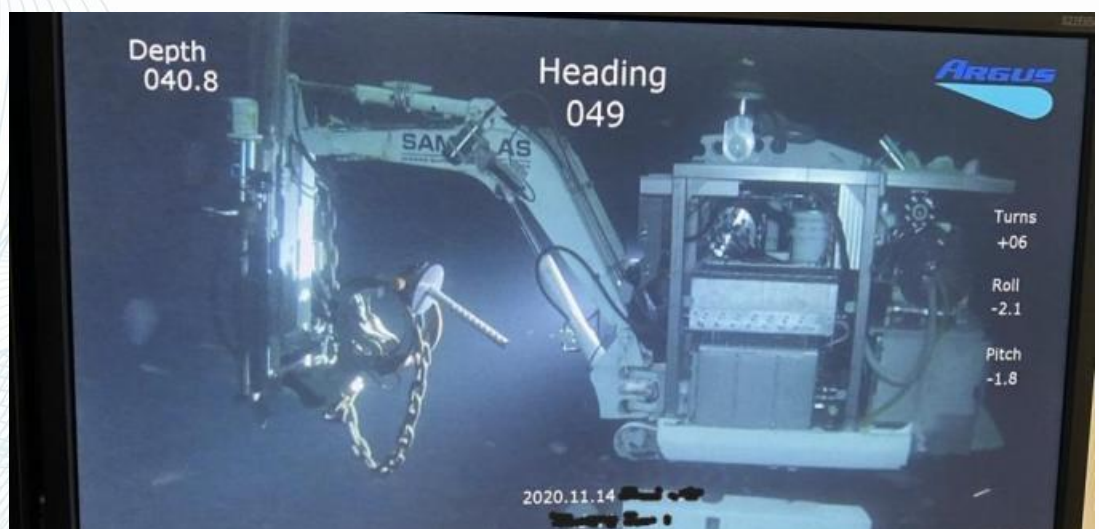
The RAPTOR SCOUT provides a powerful, reliable, and versatile solution for subsea anchoring, Excavation & Installation projects..

The RAPTOR SCOUT is a well-maintained Remotely Operated Vehicle (ROV) designed for safe and efficient subsea drilling and bolt installation. It is ideally suited for anchoring cages, installing heavy moorings, and completing subsea bolt installations.

Beyond these core functions, the RAPTOR SCOUT can be adapted for various underwater missions, depending on the installed tools and equipment.

### Key Features and Specifications

- Operational depth: Fully functional to 500 meters.
- Multi-mission capability: Flexible for other underwater operations with different tool configurations.
- Ease of use: Controlled from the container like a standard excavator.
- Rapid deployment: ROV is lowered to the seabed and ready for immediate operation.
- Integrated connectivity: Powered and monitored via vessel-based power and fibre optic connections



## Applications

- Anchoring of fish farming cages and other offshore aquaculture infrastructure.
- Installation of heavy moorings for subsea structures.
- Subsea bolt installation for marine engineering projects.
- General-purpose underwater construction and maintenance tasks.

## Operational Advantages

- Efficiency: Quick setup and operational readiness.
- Safety: Designed for secure heavy mooring and drilling operations.
- Flexibility: Can be deployed across multiple vessels and mission types.
- User-friendly: Intuitive controls minimize training requirements.

## Complete Equipment Package

The RAPTOR SCOUT comes as a fully integrated mobile system, including:

- 10 ft Control Container – Operator station for full ROV control.
- 10 ft Tool Container – Equipped with essential tools and an oil separator.
- 8 ft Transformer Container – Power regulation and distribution.
- Generator – Independent power supply for offshore operations.
- ROV Platform – Secure working base for deployment.
- Lowering Winch – Robust winch system for safe subsea deployment.

All equipment is mobile, compact, and adaptable for installation on a wide range of vessels

